

SINGATAC



Our Brief History

Year

Milestones

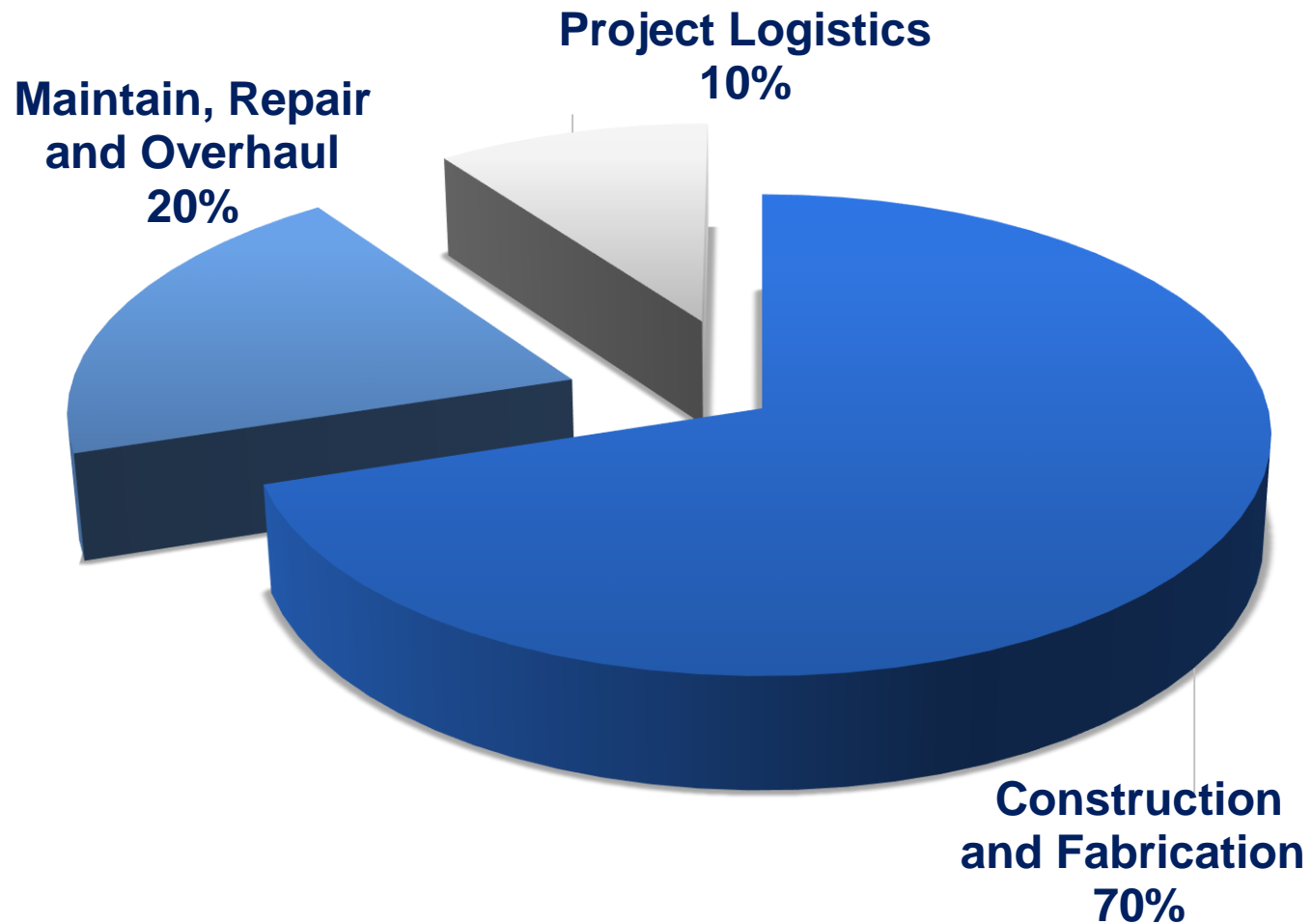
- | | |
|------|--|
| 1997 | Singatac Engineering Pte Ltd was incorporated. Started a small outfit of less than 20 people and did basic sub-contract work in steel repair for ships in shipyards. |
| 2005 | Acquired & added a seafront 10,000m ² worksite |
| 2006 | 1 st contract in offshore structures. |
| 2007 | Numerous contracts for offshore construction clients and shipyards. Operate with 600 men and 150,000m ² factory space.
Initiated move to expand production to regional country. Established presence in Kijang, Bintan, Indonesia. |
| 2008 | Set up operation in Bintan Industrial Estate. |
| 2009 | Acquired a seafront yard of 70,000m ² in Bintan, Indonesia. |
| 2011 | SOC welcomed its 1 st semi-submersible rig “Songa Eclipse” and 1 st offshore construction vessel “Skandi Hercules”. |
| 2012 | Completed construction of deep-water wharf.
SOC welcomed its 2 nd semi-submersible rig “Island Innovator” to Bintan. |
| 2015 | Numerous contracts awarded for Permanent Subsea Structures from EPC |
| 2017 | Initiated idea to develop OMC@Bintan in 2013. Entered into Joint Venture with Qube International Pte Ltd in 06 th December 2017 to jointly develop Bintan Offshore Marine Centre (BOMC). |
| 2020 | Bintan in preparation & participation for Semi Submersible & Jack Up Rig Full Reactivation in its history. |



Organization Structure



Business Segments

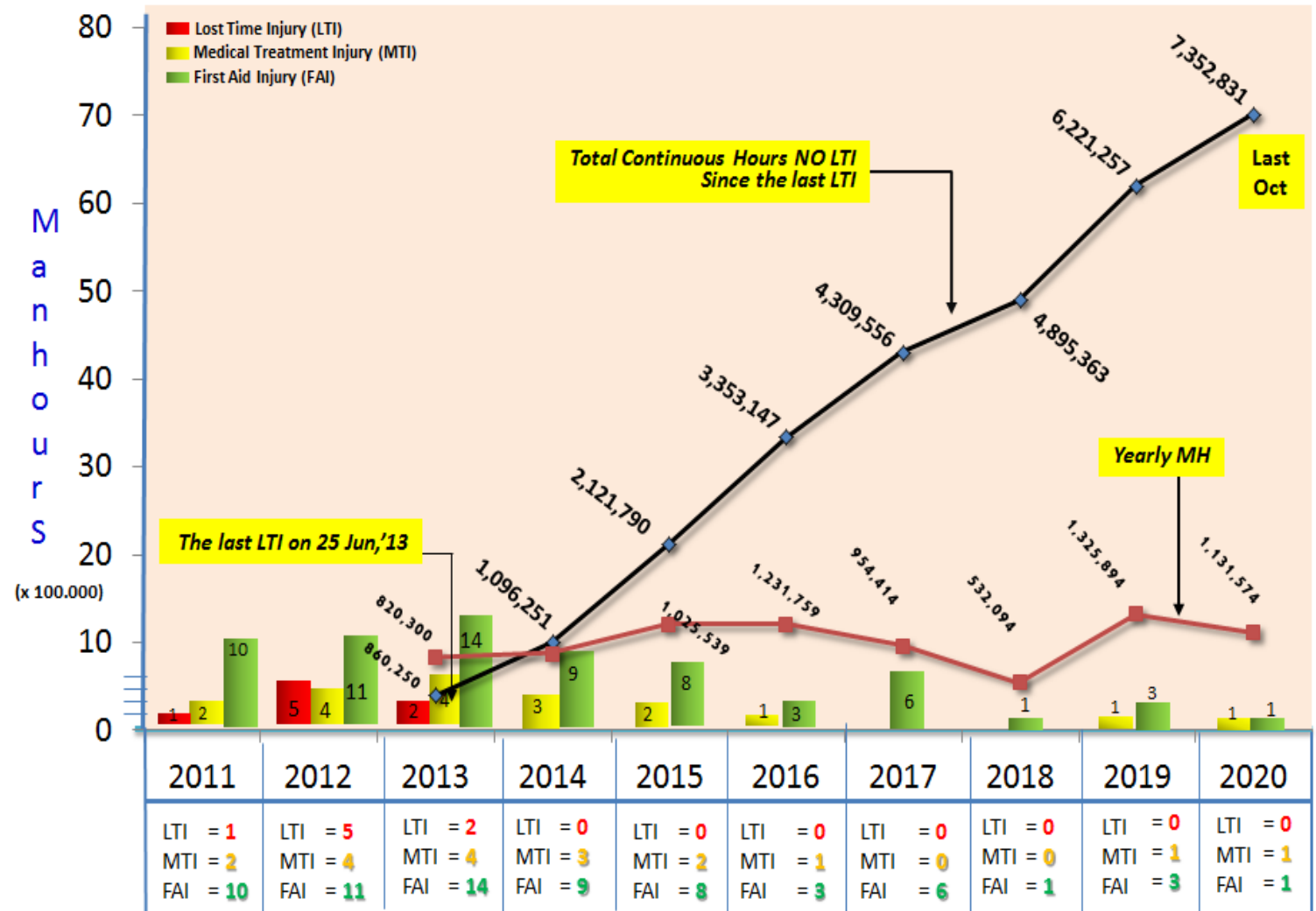


■ Construction and Fabrication ■ Maintain, Repair and Overhaul ■ Project Logistics ■



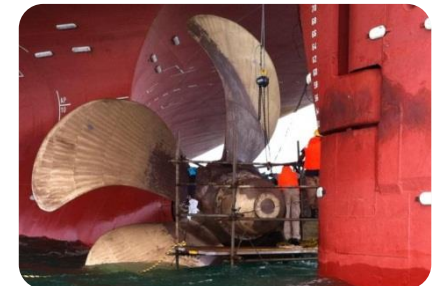
HSE Achievement

Yard HSE Performance 2011 – 2020



Our Services

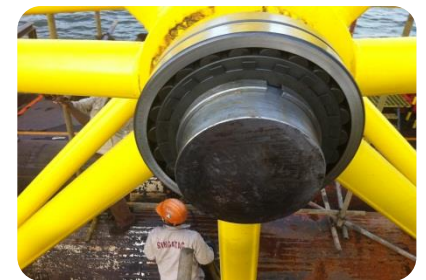
- Fabrication and installation of heavy steel structures
- Mechanical assembly & installation
- Precision machining
- Electrical & instrumentation work
- Non-destructive testing and load testing
- Grit-blasting & coating
- Logistics services and low-cost storages



Our Business Areas

Subsea Structures & Equipment

- Installation aids (deflectors, sea-fastening, spreader bars/frames, chutes, DMA, outriggers, hang-off inserts/platforms, lay-wheel, etc.)
- Mid-water arches
- Pulling heads
- Clump weights
- Anchor piles, suction piles
- Mooring buoys



Our Business Areas

Equipment for oil platforms, floating production/storage vessels, pipe-laying vessels, dredgers, etc.

- Material handling package (BOP handling, pedestal cranes, sub-sea tree handling, riser handling, etc.)
- Living quarters
- Flare towers
- Topside modules (compressor skids, boiler skids, metering skids, etc.)
- Stingers
- Spuds
- Helidecks



Our Business Areas

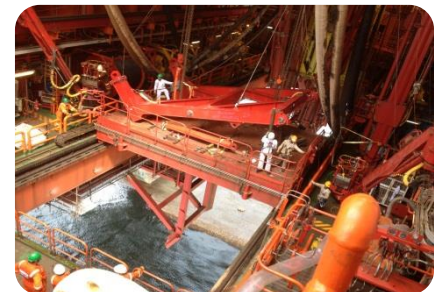
Offshore logistic base services

- Open lay-down area & covered storage area.
- Deep-water & sheltered berth (up to 14m) and anchorage (up to 40m).
- General supply (bunker, fresh water, provisions, etc)
- General services (hotel accommodation, land/sea transport, visa applications, security, port agency, freight forwarding, emergency evacuation, crew change, etc.)
- Heavy-duty rigging, lifting and shifting.
- Spooling
- Chain flaking and loading
- Pre-laid mooring
- Rental of equipment (generators, boomlifts, compressors, loaders, forklifts, fenders, etc.)



Our Business Areas

Modification, Repairs, Upgrading & Conversion



Quality, HSE & Business Permits & Certifications

S/N	Certification	Standard	Auditor / Certifying Authority
1	Quality Management System	ISO 9001:2015	DNVGL / UKAS
2	Environmental Management System	ISO 14001:2015	DNVGL / UKAS
3	Occupational Health & Safety Management System	OHSAS 18001:2007	DNVGL / UKAS
4	Health and Safety Management System / SMK3 - Gold Flag	Decree No.50 Year 2012	Sucofindo / Ministry of Manpower, Indonesia
5	Workplace Safety and Health Capabilities	bizSafe Level 3	Ministry of Manpower, Singapore
6	Shipbreaking Licence	N.A.	Indonesia
7	ASME U-Stamp (U, U1, R)	ASME Boiler & Pressure Vessel Code	LRS / ASME
8	<i>SKUP Migas – Construction Services</i>	N.A.	Ministry of Energy and Mineral Resources, Indonesia



A photograph of an offshore oil rig at sea, with a large derrick and cranes against a blue sky with some clouds.

Software for Engineering, QA/QC and Project Management

S/N	Software	Purpose
1	Aveva BOCAD	Structural steel detailing software for efficient 3D modelling and fabrication detailing
2	Cute Quality Manager-Structural Steel	QA activity planning, monitoring & reporting for structural steel
3	Cute QM-Piping	QA activity planning, monitoring & reporting for piping
4	Primavera P6	Project management & reporting
5	ZWCAD	3rd Party AutoCAD
6	Autodesk Inventor Pro	3D mechanical design, simulation, visualization, and documentation
7	SketchUp Pro	3D content creation tool

Our Yard Facilities



Headquarter
Fabrication Workshop

No.26 Tuas Avenue 10
Singapore

Land Area : 6,000m²



Fabrication Zone

21 Tuas Basin Lane (637069)
Singapore

Land Area : 10,000m² c/w 100m water
frontage and 02 units of 40m x 20m x
8m 10tons-crane equipped workshops.

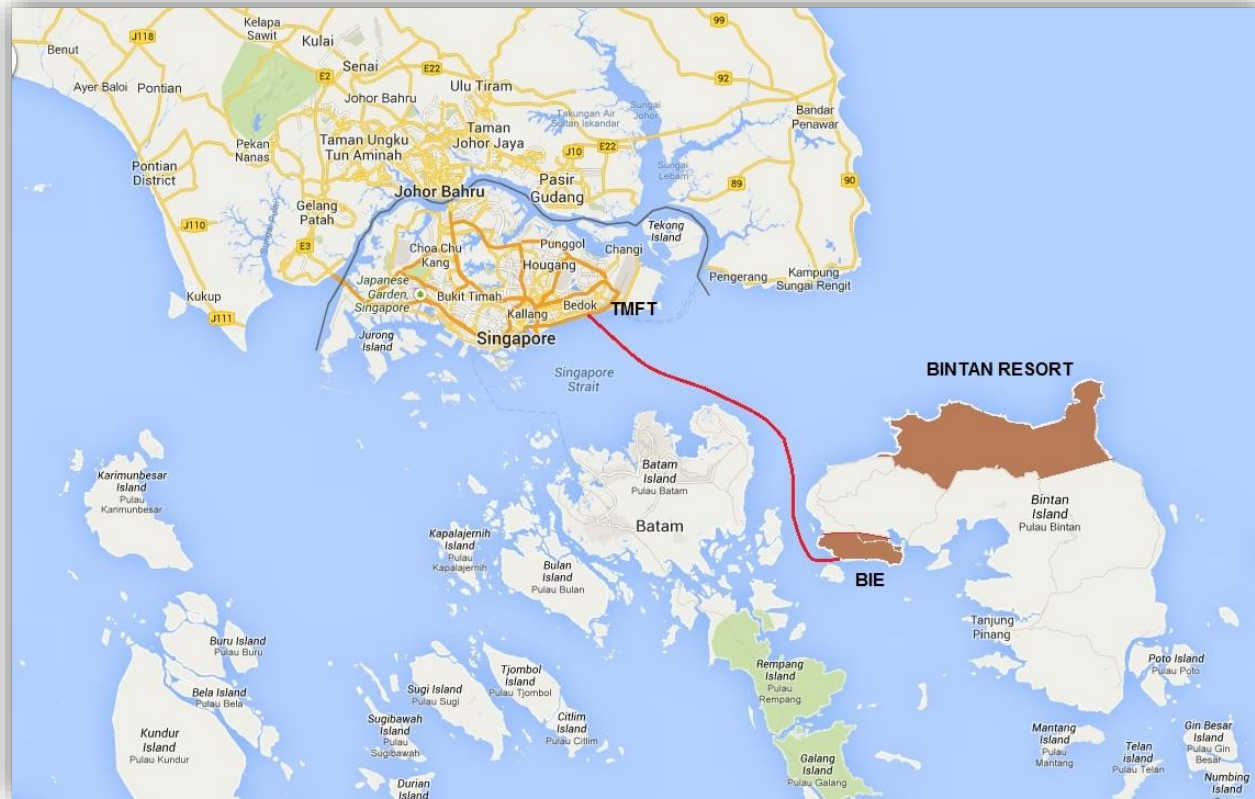


Fabrication Yard

PT. Singatag Bintan,
Lot 2 Bintan Industrial Estate
Lobam, Bintan, Kepulauan
Riau 29154, Indonesia

Land Area : 70,000m²
c/w 200m water frontage

Bintan Industrial Estate

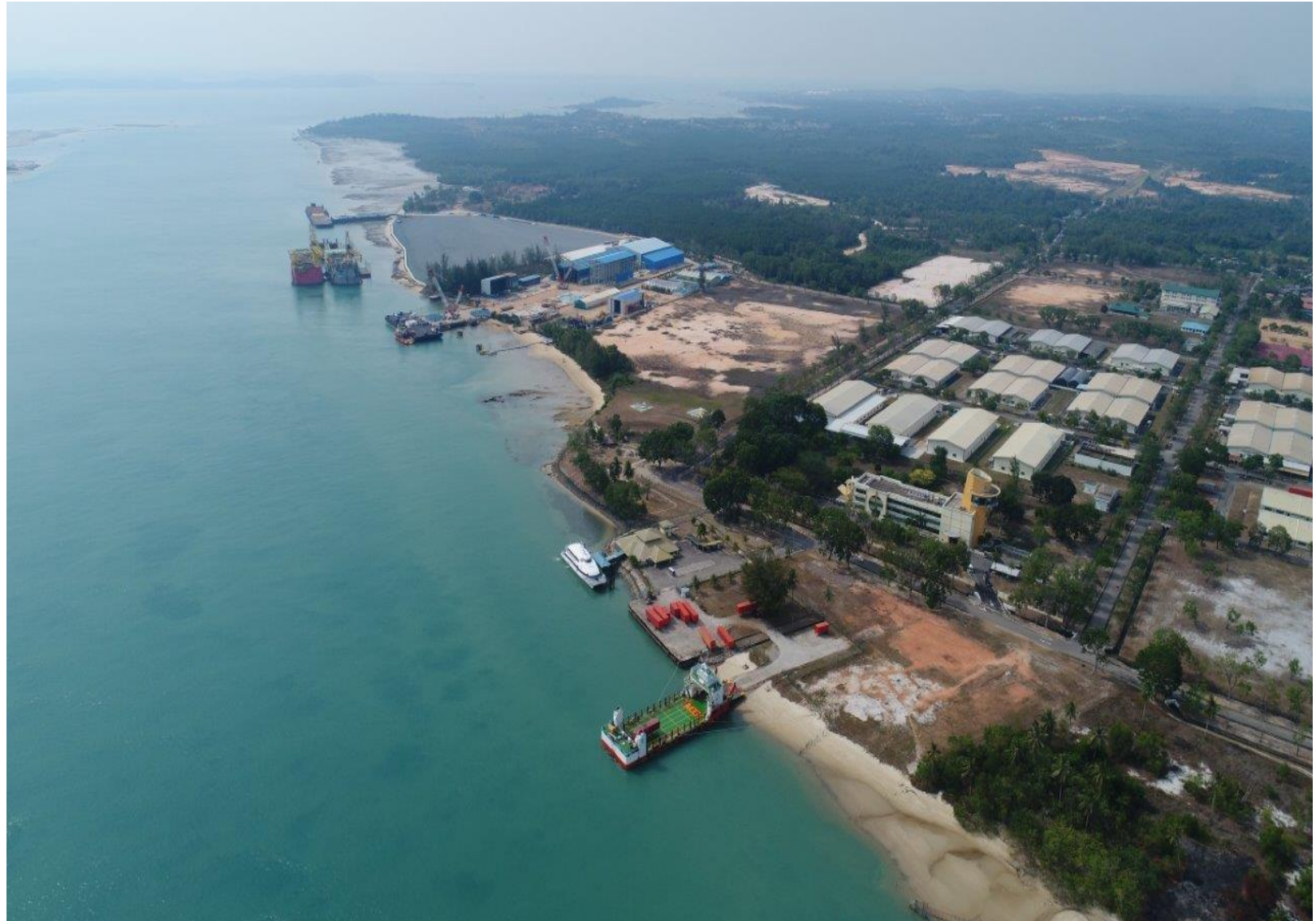


A large offshore oil rig is visible on the left side of the slide, set against a blue sky with some clouds. The rig has a tall derrick and various platforms and cranes.

Bintan Industrial Estate

- Estate Owner/Operator : Gallant Venture Ltd (SGX-Listed)
- Land Area : 4,000 Hectares
- BIE is an integrated industrial park
 - * Electricity : 21 MW
 - * Potable Water (WHO Standard) : 7,500m³/day
 - * Sewage Treatment : 3,000m³/day
 - * Telecom Infrastructure : 1,000 lines (broadband-enabled)
 - * Wastewater Treatment : 2,000m³/day
 - * Dormitory Capacity : 10,000 persons
 - * Ready-built factories for short-term & long-term lease
- Direct daily ferry (60mins) connection between Tanah Merah Ferry Terminal, Singapore & estate.
- Direct daily cargo (FCL, LCL & oversized) shipment between Jurong Port, Singapore and estate using RoRo vessel. ISPS-certified.
- Dedicated CIQP within the estate.
- International port licence.
- Free-Trade Zone. No duty and tax on imports and exports
- Local liaison support for effective management of relationship of local stakeholders.

Bintan Industrial Estate (BIE)



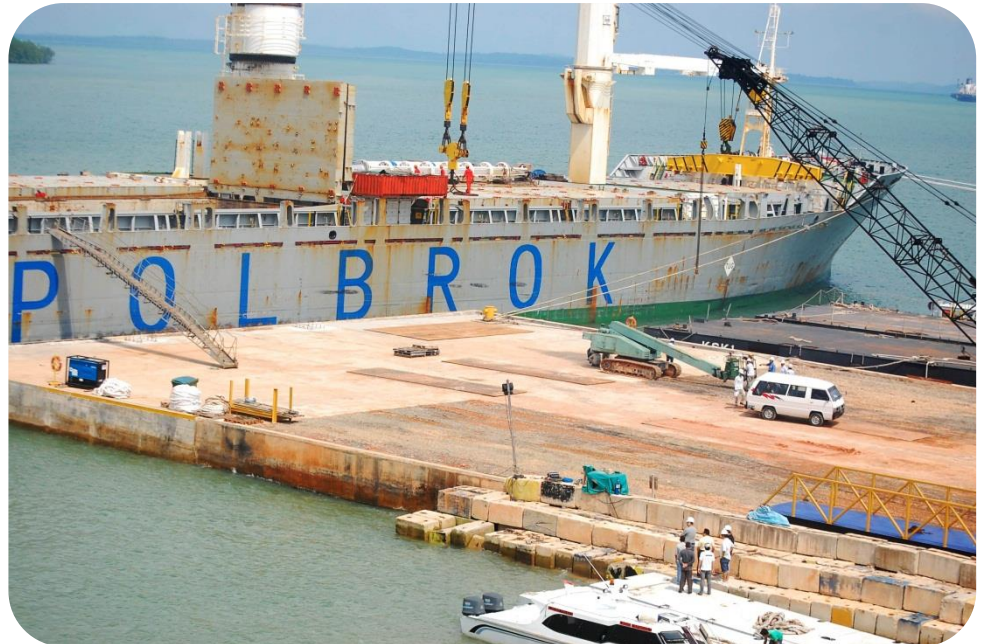
PT Singatac Bintan, Indonesia



PT Singatac Bintan, Indonesia



Visual Perspective



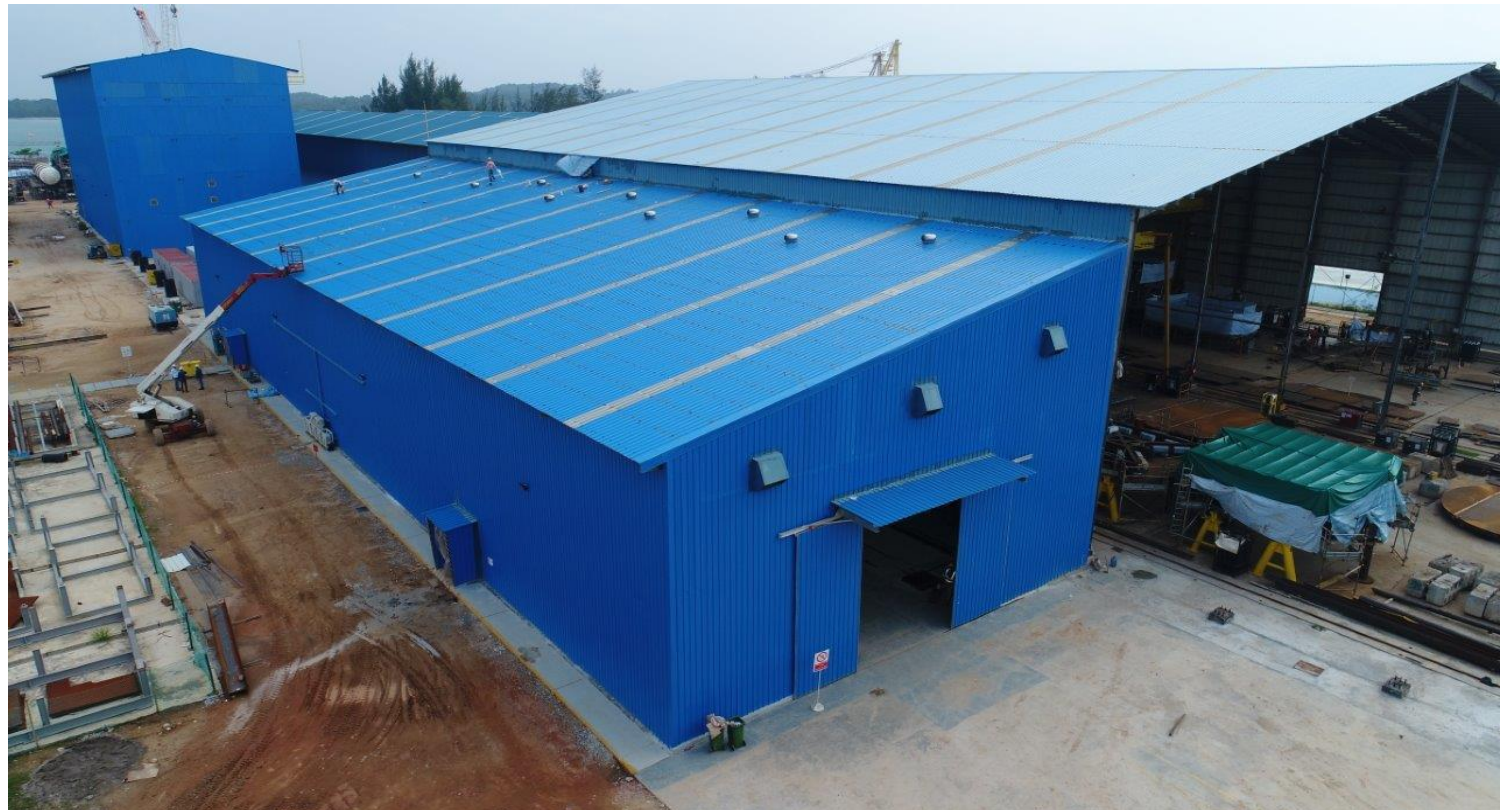
New Blasting and Painting Chamber (15mW x 35mL x 12mH) c/w opening 14.5mW x 34mL x 12mH

- Semi Auto Grit Recycling System
- Dust Collectors
- Lighting System
- Skidding Trolley System
- Dehumidifiers
- Vacuum Recovery Machine



Investment

- **New** CNC Precision Machine shop cum White Metal Piping workshop (19mW x 72mL x 10mH)
 - Furnished with Overhead crane 10 Tons x 2 units and hook height is 7mH.
 - Floor bearing Load 10 tons per sqm.



Investment



Enclosed Assembly Hall (20mW x 60mL x 23mH) c/w opening 18.5mW x 58.5mL x 20mH

- Furnished with Overhead crane 30 Tons x 2 units and hook height is 20mH.
- Floor bearing Load 10 tons per sqm.



Investment

- **New** Orbital Welding Machine for tubing and tubulars
 - Placed Order on September 2018 and complete Internal trial check and training of operators by mid of December 2018.
 - Able to weld tubing 6mm to 76.2mm
 - Able to weld tubulars from 38.1mm to 600mm
 - Pipe Cutting & Accessories, Tube Squaring & Bender
- **New** Boroscope
 - Planned to buy the Boroscope of Model: Extech HDV-5CAM-30FM, 5.5mm videoscope camera head, Macro lens and 30m flexible cable
- **New** Qualification of Welders
 - Recruit welders and start training by October 2018



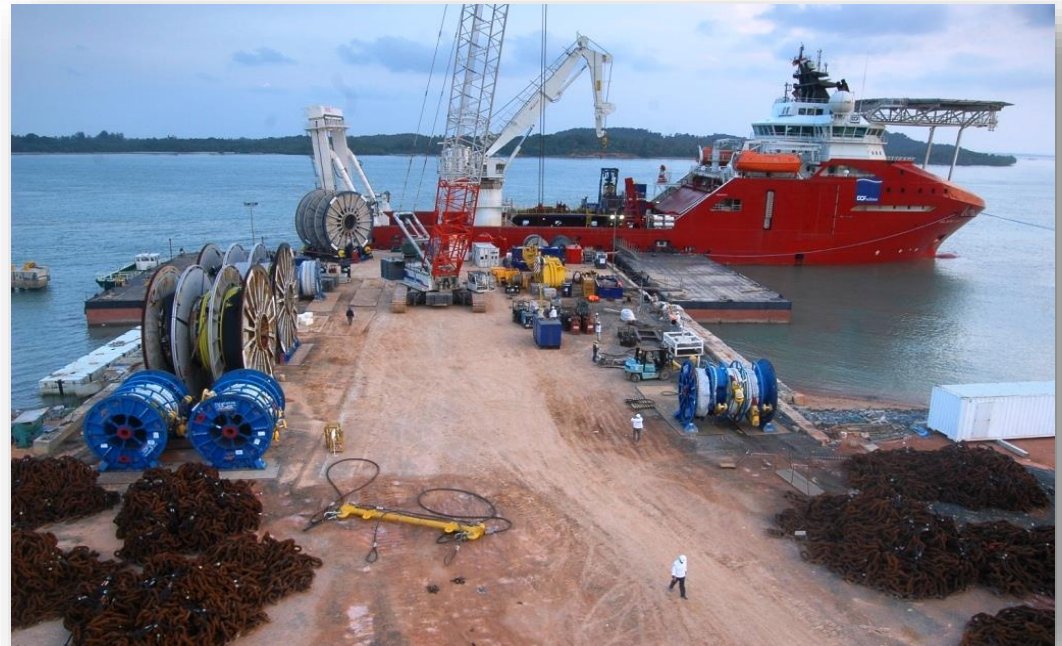
OPEN ORBITAL WELDING PRODUCTS



CLOSED ORBITAL WELDING PRODUCTS



Our Visitors



Our Visitors



Our Visitors



Our Visitors



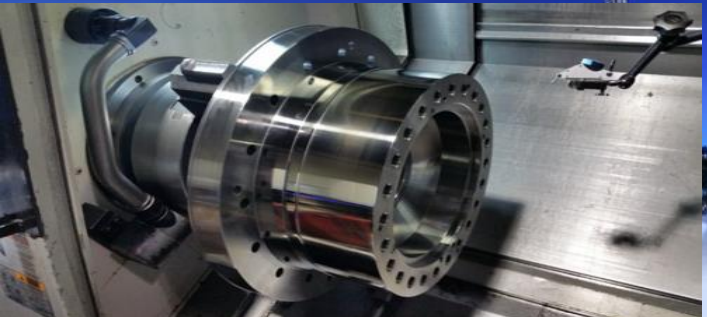
Project Reference



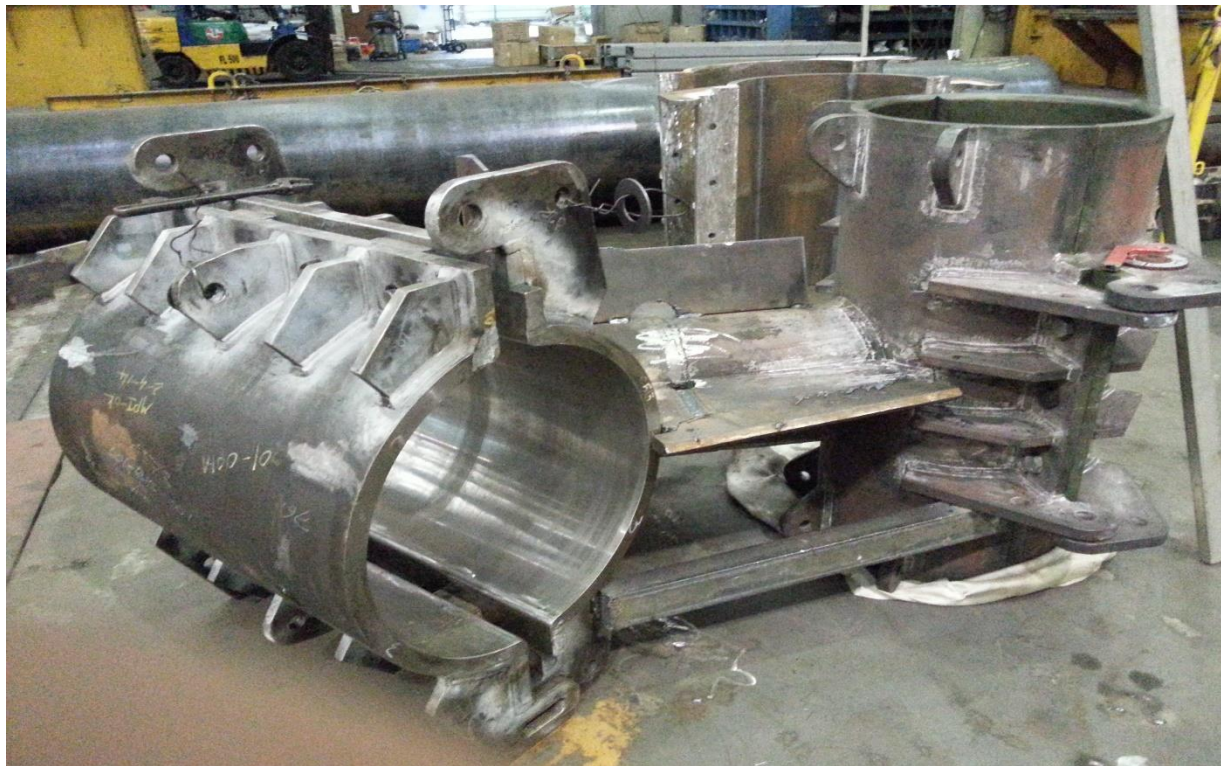


Precision Machining Equipment

S/N	Type	Machine Specification	Qty	Make
1	CNC HM63H Horizontal (Heavy Duty) Milling	630 x 630 Pallet	1	Doosan
2	CNC Vertical lathe V 850 T	X 850 x Z 1000	2	Doosan
3	CNC Horizontal Lathe (heavy duty)	X 950 x Z 3850 mm	1	HANKOOK
4	CNC Horizontal Lathe (heavy duty)	X 1000 x Z 2500 mm	1	HANKOOK
5	CNC Horizontal Lathe (heavy duty)	X 900 x Z 2000 mm	1	HANKOOK
6	CNC Turning Centre	X 400 x Z 600 mm	1	TAKISAWA/TAIWAN
7	CNC Turning Centre	X 160 x Z 250 mm	1	MAZAK Q TURN/JAPAN
8	CNC Milling Machine	X 1400 mm x Y 800 x Z 750 mm	1	CAMPRO/TAIWAN
9	CNC Milling Machine	X 1200 x Y 600 x Z 650 mm	1	LITZ/TAIWAN
10	CNC Milling Machine	X 850 x Y 600 x Z 650 mm	1	EVERAX/TAIWAN
11	CNC Turning Centre	X 400 x Z 600 mm	1	TAKISAWA/TAIWAN
12	Conventional horizontal boring machine	X 2000 x Y 500 x Z 600mm	1	ASADA
13	Conventional lathe (light duty)	X 300 x Z 700mm	2	MICROCUT
14	Conventional lathe (heavy duty)	X 800mm x Z 1500 mm	1	SHIZUOKA
15	Conventional lathe (heavy duty)	X 1000 x L 3500 mm	1	SHIZUOKA
16	Conventional lathe (heavy duty)	X 400 x L 1000 mm	1	SHIZUOKA
17	Conventional lathe (heavy duty)	X 1200 x Z 2000mm	1	KOTOBUKI
18	Conventional milling machine	X 600 x Y 200 x Z500mm	2	WONSEN
19	Auto feeder band saw cutting machine	Dia 550 mm	1	DELTA
20	Radial Drilling	Swing 2000mm	1	IKEDA







Project Reference



Project References for PT Singatac Bintan



TECHNIP INDONESIA - CHEVRON Bangka SIC



- PLEM
- Gooseneck (X65 Cladded Inconel 625)
- Wet Parking Frames
- Topside Spools (Inconel 625)
- PLRs and Hold-Back Anchor
- Offshore Installation Aids



TECHNIP INDONESIA – ENI JANGKRIK



5-SLOT MWA STRUCTURES @ 03 SETS

Total weight is 481 tons per set, with Arch structure 131 tons and Gravity base 350 tons. Singatac also include Tether Chains and overall assembly and testing

4-SLOT MWA STRUCTURES @ 01 SET

Total weight is 369 tons per set, with Arch structure 115 tons and Gravity base 254 tons. Singatac also include Tether Chains and overall assembly and testing



TECHNIP INDONESIA – ENI JANGKRIK



Flow-Line End Terminal (FLET)

Fabricated total 04 units of FLETs, include suction piles integrated with FLET.

SuperDuplex (25Cr) pipings



TECHNIP INDONESIA – ENI JANGKRIK



GooseNecks

Fabricated total 44 units of GooseNeck, include Yoke Handling frame and other offshore installation aids



600 Tons CAROUSEL

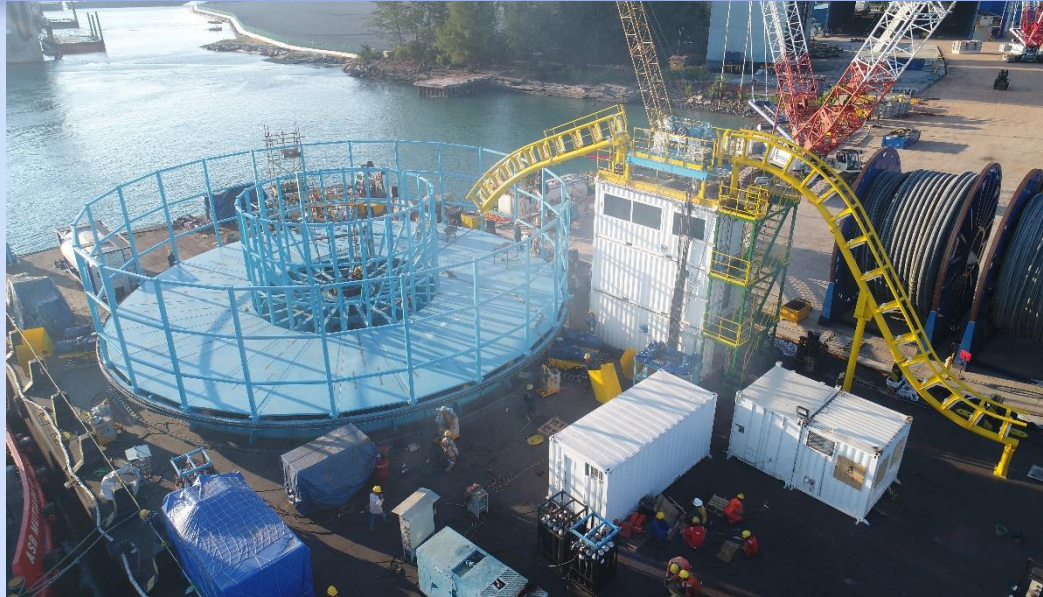
Modification, final assembly and commissioning



3000 Tons CAROUSEL



Fabrication, final assembly and commissioning



TechnipFMC Indonesia – Medco Buntal 5



Fisher-Friendly
System and
Permanent
Mudmat

Weight : 25 tons



Louis Dreyfus Travocean (France)



Subsea Plough

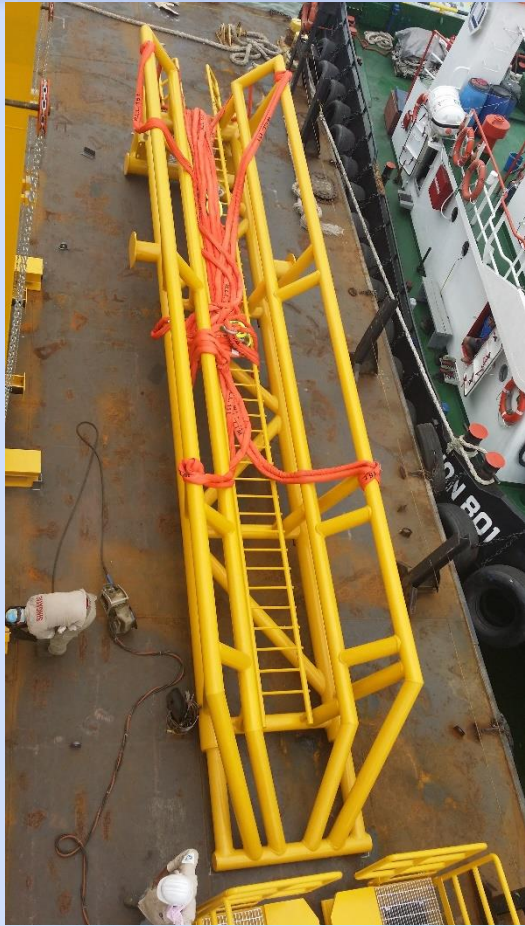
Made of S690QL, EN 10025-6

Vautid 100 (Standard
S235+Chromium carbide) with
58 to 60 HRC

XAR 450 (Hardox)



TECHNIP FRANCE – TOTAL BLOCK 15/06



Boat Landing

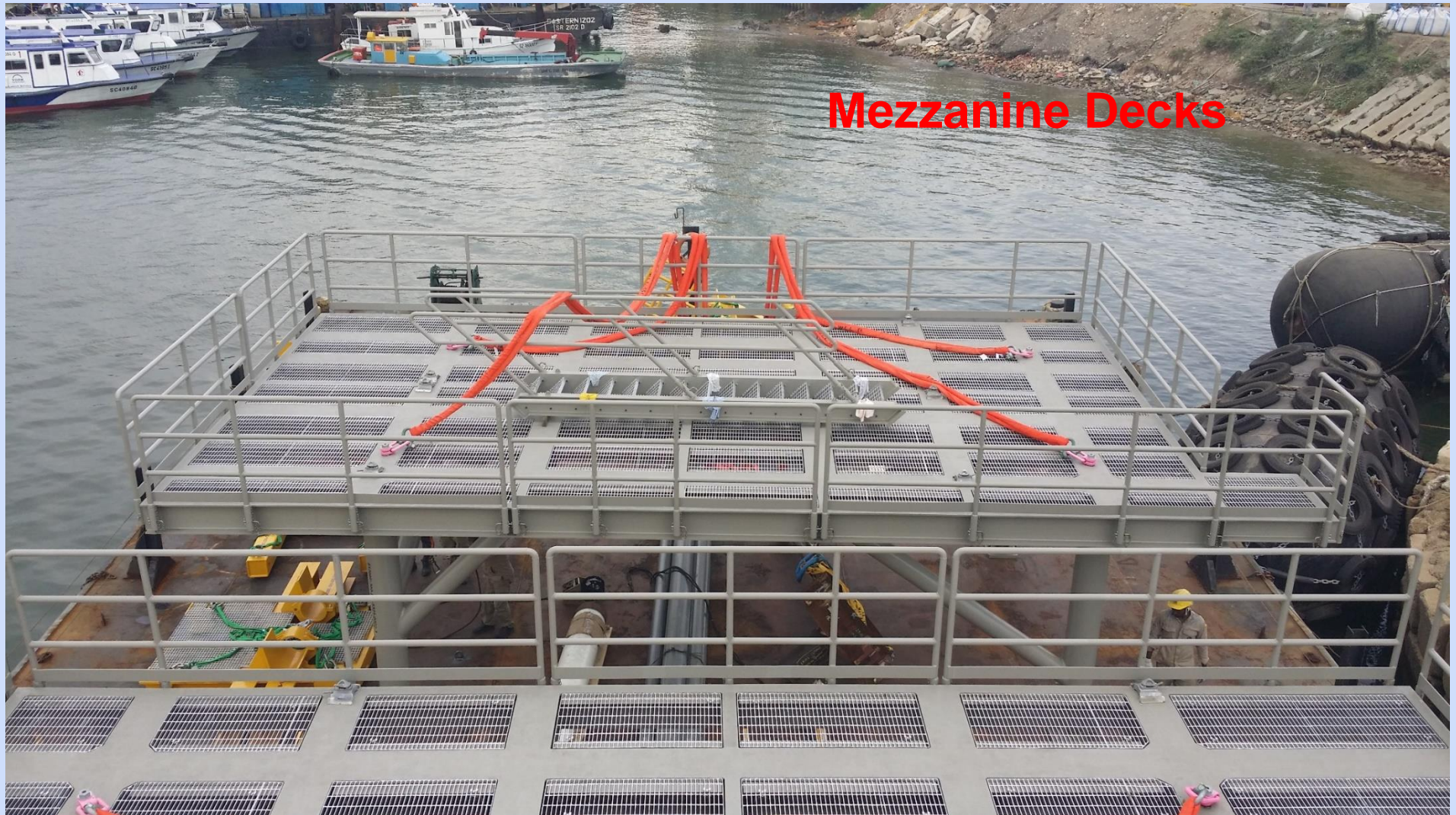


Buoyancy Racks



Working Platforms

TECHNIP FRANCE – TOTAL BLOCK 15/06



TECHNIP FRANCE – TOTAL BLOCK 15/06



Anti Friction Clamp



Access Landing Structure



HangOff Platform



SRB Platform

JAN DE NUL – SQUARE SPUD (40M WITH 150 TONS)



SUBSEA 7 FRANCE – TOTAL CLOV ANGOLA



TECHNIP MALAYSIA – SHELL GUMUSUT KAKAP



Holdback Anchor Riser

Dia 9.6m x 10mL x 105 Tons

SUBSEA 7 AUSTRALIA / SapuraAcergy

Gorgon Tied-in Spools spreader bars



TECHNIP MALAYSIA – SHELL GUMUSUT KAKAP



Reel 114 Cradles c/w approximately 10000 holes



Project Reference



Project Reference



Bintan Offshore Marine Centre (BOMC)



Bintan Offshore Marine Centre (BOMC)



Area	94 ha
BOMC Port and Fabrication Area	12 ha @ 10 tons / m2
Covered workshops	12 ha
Spool base	10 ha
Long term storage areas	70 ha
Office Area with Common Facilities <ul style="list-style-type: none">- Meeting Rooms- Training Rooms- Canteen Building- Lobby, Toilets, etc.	Approximately 4,500m ² ; able to contain 300 Person



Development of BOMC



Development of BOMC



A vertical photograph of an offshore oil rig against a blue sky with some clouds. The rig is a complex of metal structures, including a tall derrick and various platforms, situated in the ocean.

Contact Us

SINGATAC ENGINEERING PTE LTD

Address: No.26 Tuas Avenue 10, Singapore 639147

Tel: +65 68979566

Email: info@singatac.com.sg

Website: www.singatac.com.sg and <http://singatac-offshore-centre.blogspot.sg/>

PT SINGATAC BINTAN

Lot 2 Bintan Industrial Estate

Lobam, Bintan Kepulauan Riau 29154

Indonesia

Tel: +62 770 696788/789

Fax: +62 770 696790

****THE END****